

F.R.L.  
F.R.  
F (Filtr)  
R (Reg)  
L (Lub)  
Drain  
Separ  
Mech  
Press SW  
Res press  
exh valve  
SlowStart  
Anti-bac/Bac-  
remove Filt  
Film  
Resist FR  
Oil-ProhrR  
Med  
Press FR  
No Cu/  
PTFE FRL  
Outdrs FRL  
Adapter  
Joiner  
Press  
Gauge  
CompFRL  
LgFRL  
PrecsR  
VacF/R  
Clean FR  
ElecPneur  
AirBoost  
Speed Ctrl  
Silncr  
CheckV/  
other  
Fit/Tube  
Nozzle  
Air Unit  
PrecsCompn  
Electro  
Press SW  
ContactSW  
AirSens  
PresSW  
Cool  
Air Flo  
Sens/Ctrl  
WaterRtSens  
TotAirSys  
(Total Air)  
TotAirSys  
(Gamma)  
Gas  
generator  
RefrDry  
DesicDry  
HiPolymDry  
MainFiltr  
Dischrg  
etc  
Ending



# Regulator

## B2019 Series

● Port size: Rc1/8, Rc1/4

JIS symbol



### Specifications

1 MPa = 10 bar

Item	B2019-1C/2C	
Working fluid	Compressed air	
Max. working pressure	MPa	2.06 (≈300 psi, 20.6 bar)
Proof pressure	MPa	3.09 (≈450 psi, 30.9 bar)
Ambient / fluid temperatures	°C	5 (41°F) to 65 (149°F)
Set pressure	MPa	0.04 (≈5.8 psi) to 0.83 (≈120 psi)
Pressure relief	With relief mechanism	
Port size	Rc	1/8 / 1/4
Weight	kg	0.2

Ozone-proof specifications (Ending Page 16)

B2019 — ..... — P11

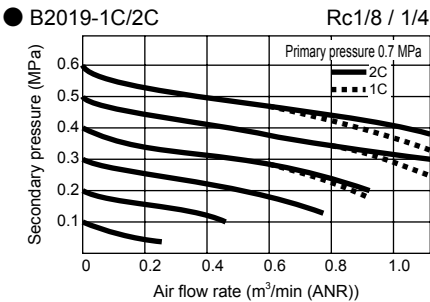
### Option weight

\* Add to the weight of the standard accessories.

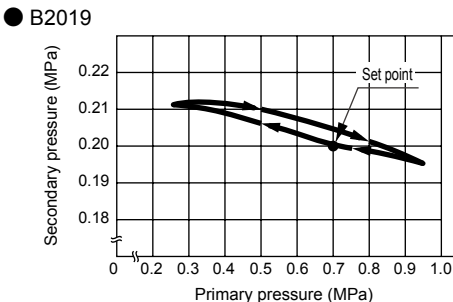
Unit: kg

	Panel mount	Pressure gauge	Bracket
Code	P	G	B
B2019	0	0.086	0.035

### Flow characteristics



### Pressure characteristics



### How to order

**B2019** — **2C** — **NPB**

Model No.

Ⓐ Port size  
\*1

Ⓑ Option  
\*2 to 5

[Example of model No.]

**B2019-2C-NPB**

Model: Regulator

Ⓐ Port size: Rc 1/4

Ⓑ Option: Non-relief,  
panel mount,  
bracket included

### ⚠ Precautions for model No. selection

\*1 : If port size NPT thread is required, do not indicate nominal size C. (Example) B2019-1  
If a pressure gauge is selected, the NPT thread pressure gauge is enclosed.

\*2 : Options can be combined.

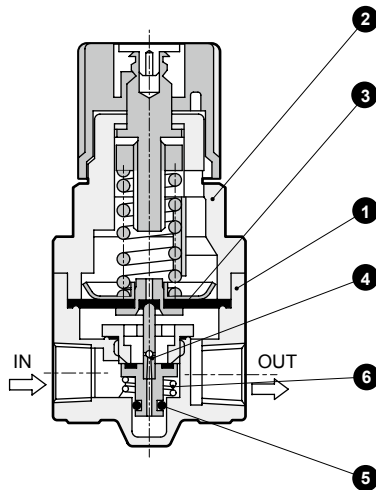
\*3 : If option codes "B" and "G" are indicated, a pressure gauge and a bracket are enclosed.  
The pressure gauge supplied is G49D-6-P10 (G49D-6-P04 for low pressure). Refer to related products (page 363) for pressure gauge specifications.

\*4 : Contact CKD when assembly products are required.

\*5 : If option B (bracket) is selected, a 6506 bracket is enclosed, while if PB (bracket for panel mount) is selected, a 6166 bracket is enclosed.  
Refer to page 419 for the included product "B" bracket.

Code	Description	
A Port size		
1C	Rc1/8	
2C	Rc1/4	
B Option		
Regulator	Blank	Standard
	N	Non-relief
	L	Low pressure (0.02 to 0.34 MPa)
	P	Panel mount
Included product	Blank	Not included
	G	Pressure gauge
	B	Bracket

## Internal structure and parts list



No.	Part name	Material
1	Body	Zinc alloy die-casting
2	Cover	Zinc alloy die-casting
3	Diaphragm assembly	Nitrile rubber, zinc alloy die-casting, steel
4	Valve assembly	Copper alloy/hydrogenated nitrile rubber
5	O-ring	Nitrile rubber
6	Bottom spring	Stainless steel
7	O-ring	Nitrile rubber
8	Bottom plug	Zinc alloy die-casting

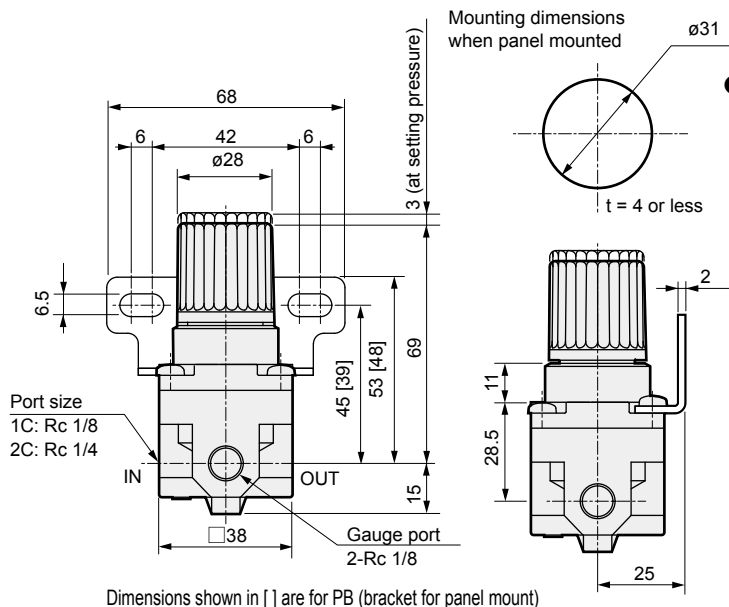
## Repair parts list

No.	Part name	Model No.
3	Diaphragm assembly	Relief
		Non-relief
4	Valve assembly	B2019-DIAPHRAGM-ASSY
5		B2019-DIAPHRAGM-ASSY-N
		B2019-VALVE-ASSY

## Dimensions



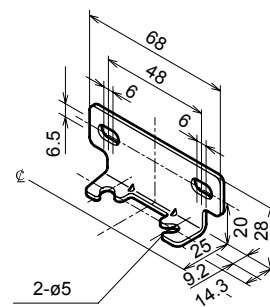
## ● B2019



- Wall bracket: 6506

Material: Steel  
Zinc plated

Bracket thickness 2 mm

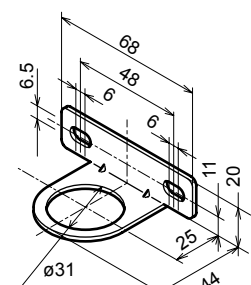


\* Tapping screw attached

- Wall bracket: 6166

·Material: Steel  
Zinc plated

Bracket thickness 2 mm



F.R.L.  
F.R.  
F (Filtr)  
R (Reg)  
L (Lub)  
Drain  
Separ  
Mech  
Press SW  
Res press  
exh valve  
SlowStart  
Anti-bac/Bac-  
remove Filtr  
Film  
Resist FR  
Oil-ProhR  
Med  
Press FR  
No Cu/  
PTFE FRL  
Outdrs FRL  
Adapter  
Joiner  
Press  
Gauge  
CompFRL  
LgFRL  
PrecsR  
VacF/R  
Clean FR  
ElecPneuR  
AirBoost  
Speed Ctrl  
Silncr  
CheckV/  
other  
Fit/Tube  
Nozzle  
Air Unit  
PrecsCompr  
Electro  
Press SW  
ContactSW  
AirSens  
PresSW  
Cool  
Air Flo  
Sens/Ctrl  
WaterRISens  
TotAirSys  
(Total Air)  
TotAirSys  
(Gamma)  
Gas  
generator  
RefrDry  
DesicDry  
HiPolymDry  
MainFiltr  
Dischrg  
etc  
Ending